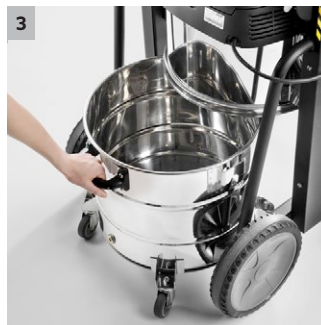
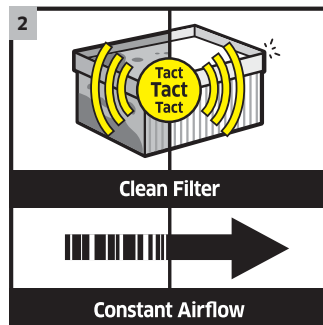




IVC 60/12-1 Tact EC

Long life single phase compact industrial vacuum with EC brushless motor and Tact automatic filter clean system for heavy duty dust extraction.



1 Designed for continuous operation

- The brushless Ec motors are wear-resistant and have a minimum service life of 5,000 hours, ideal for three-shift operation.

2 Tact system (Auto Filter Clean System)

- The two filters are cleaned with powerful blasts of air automatically for a constant high suction power.

3 Waste container with set-down mechanism

- The waste container with set-down mechanism ensures ergonomic emptying, even when the vacuumed waste is heavy.

4 With compact flat pleated filter

- The compact flat pleated filter allows a large filter area with a small and clear design.



IVC 60/12-1 Tact EC

- Antistatic equipment
- Liquid cut-off
- Integrated pre-separation cyclone

Technical data

Order no.	1.576-102.0	
EAN code	4039784463714	
Current type	Ph / V / Hz	1 / 220 - 240 / 50 - 60
Air flow	l/s / m³/h	62,5 / 225
Vacuum	mbar / kPa	244 / 24,4
Container content	l	60
Rated input power	kW	1,2
Filter area	m²	0,95
Nominal size	ID 70	
Accessory nominal size	ID 50 / ID 40	
Sound pressure level	dB(A)	74
Weight	kg	59
Dimensions (L x W x H)	mm	970 x 690 x 995

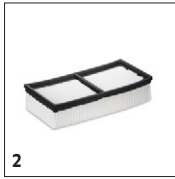
Equipment

Accessories included with machine	no
------------------------------------------	----

IVC 60/12-1 TACT EC 1.576-102.0



1



2

		Order no.	Anzahl	Dummy	Dummy	Dummy	Price	Description	
Flat pleated filter (paper)									
Flat pleated filter (paper)	1	6.907-276.0	1 piece(s)					Paper, dust class M.	<input type="checkbox"/>
Flachfaltenfilter (PTFE)									
Flat pleated filter, PTFE	2	6.907-449.0	1 piece(s)						<input type="checkbox"/>

Available accessories.

IVC 60/12-1 TACT EC 1.576-102.0

KÄRCHER



		Order no.	Quantity	ID	Length / width	Price	Description	
Adapter Accessory								
Adapter DN50/DN51	1	9.989-603.0		DN 50				<input type="checkbox"/>
Adapter DN51/DN50	2	9.989-601.0		DN 50				<input type="checkbox"/>
Adapter DN50/DN61	3	9.989-602.0		DN 50				<input type="checkbox"/>
Adapter DN61/DN50	4	9.989-604.0		DN 50				<input type="checkbox"/>
Reducers								
Reducer DN 70/DN 50 (SBG)	5	9.977-772.0		DN 70				<input type="checkbox"/>
Reducer DN70/DN40	6	9.989-690.0		DN 70				<input type="checkbox"/>
	7	9.981-231.0		DN 50				<input type="checkbox"/>
Reducer V2A DN72 auf DN52	8	9.989-712.0		DN 70				<input type="checkbox"/>
Reducer V2A DN70/DN40	9	9.989-713.0		DN 70				<input type="checkbox"/>
Expanders								
	10	9.981-936.0		DN 40				<input type="checkbox"/>
	11	9.981-921.0		DN 50				<input type="checkbox"/>
Distributors								
Distributor DN70/DN50/DN50	12	9.989-611.0		DN 70				<input type="checkbox"/>
PVC								
Hose PVC DN40 3 m	13	9.989-647.0		DN 40				<input type="checkbox"/>
Hose PVC DN40 5 m	14	9.989-614.0		DN 40				<input type="checkbox"/>
Hose without connection PVC DN40 15 m	15	9.989-633.0		DN 40				<input type="checkbox"/>
EVA								
Extension hose EVA el. DN42 3m	16	9.988-088.0		DN 40				<input type="checkbox"/>
Extension hose EVA el. DN42 5m	17	9.988-089.0		DN 40				<input type="checkbox"/>
Hose without connection EVA DN40 15 m	18	9.989-630.0		DN 40				<input type="checkbox"/>
ME								
Hose connection kit DN40	19	9.989-627.0		DN 40				<input type="checkbox"/>
PU								
Hose PU DN40 3 m	20	9.989-617.0		DN 40				<input type="checkbox"/>
Hose PU DN40 5 m	21	9.989-618.0		DN 40				<input type="checkbox"/>
Hose without connection PU DN40 15 m	22	9.989-637.0		DN 40				<input type="checkbox"/>
ME-PU								
Hose ME-PU DN40 3 m	23	9.989-621.0		DN 40				<input type="checkbox"/>
	24	9.989-622.0		DN 40				<input type="checkbox"/>
Hose without connection ME-PU DN40 15 m	25	9.989-640.0		DN 40				<input type="checkbox"/>
Handles								
Hand grip curved 45°, DN 42	26	9.977-679.0		DN 40				<input type="checkbox"/>
Hand grip curved stainless steel 45°IK D	27	9.989-036.0		DN 40				<input type="checkbox"/>
Elbow aluminium 45° DN40	28	9.989-544.0						<input type="checkbox"/>
Elbow aluminium 45° DN50	29	9.989-547.0						<input type="checkbox"/>

Available accessories.

IVC 60/12-1 TACT EC

1.576-102.0



		Order no.	Quantity	ID	Length / width	Price	Description	
Suction tubes								
Suction tube 750 mm DN40	30	9.977-525.0		DN 40				<input type="checkbox"/>
Extension pipe stainless steel DN40 US	31	9.989-039.0		DN 40				<input type="checkbox"/>
Extension pipe stainless steel DN50 IK,	32	9.988-114.0		DN 50				<input type="checkbox"/>
Suction tube carbon 1500mm DN40	33	9.989-552.0		DN 40				<input type="checkbox"/>
Suction tube carbon 1500mm DN50	34	9.989-553.0		DN 50				<input type="checkbox"/>
Standard nozzles								
Standard nozzle PVC DN40	35	9.989-674.0		DN 40				<input type="checkbox"/>
Standard nozzle PVC DN50	36	9.989-673.0		DN 50				<input type="checkbox"/>
Nozzle elastic silicon DN42	37	9.988-401.0		DN 40				<input type="checkbox"/>
Nozzle elastic silicon DN52	38	9.988-402.0		DN 50				<input type="checkbox"/>
Standard nozzle rubber cuttable DN40	39	9.989-677.0		DN 40				<input type="checkbox"/>
Standard nozzle rubber cuttable DN50	40	9.989-675.0		DN 50				<input type="checkbox"/>
	41	9.980-748.0		DN 40				<input type="checkbox"/>
	42	9.980-749.0		DN 50				<input type="checkbox"/>
Standard nozzles bendable								
Nozzle, zinc coated, flexible, with rubber tip	43	9.981-420.0		DN 40				<input type="checkbox"/>
	44	9.981-421.0		DN 50				<input type="checkbox"/>
	45	9.981-429.0		DN 40				<input type="checkbox"/>
Floor nozzles								
Floor nozzle Alu 370 mm DN40	46	9.989-683.0		DN 40				<input type="checkbox"/>
Floor nozzle Alu el 370 mm DN40	47	9.989-682.0		DN 40				<input type="checkbox"/>
Multi-purpose nozzle 370mm el. leit., DN	48	9.987-612.0		DN 50				<input type="checkbox"/>
	49	9.989-558.0		DN 40				<input type="checkbox"/>
	50	9.981-923.0						<input type="checkbox"/>
Rubber lips with molding 370mm	51	9.981-914.0						<input type="checkbox"/>
	52	9.981-915.0						<input type="checkbox"/>
Bürstenleiste Satz elektr. leitend, für	53	9.984-939.0						<input type="checkbox"/>
	54	9.980-764.0						<input type="checkbox"/>
Crevice nozzles								
Crevice nozzle, lightweight plastic	55	9.988-116.0		DN 40				<input type="checkbox"/>
	56	9.988-117.0		DN 50				<input type="checkbox"/>
	57	9.981-483.0		DN 40				<input type="checkbox"/>
	58	9.981-482.0		DN 50				<input type="checkbox"/>
Nozzle Crevice nozzle 17 mm x 120 mm DN4	59	9.989-680.0		DN 40				<input type="checkbox"/>
Nozzle Crevice nozzle 25 mm x 120 mm DN4	60	9.989-678.0		DN 40				<input type="checkbox"/>
	61	9.981-442.0		DN 50				<input type="checkbox"/>
	62	9.981-465.0		DN 50				<input type="checkbox"/>
Crevice nozzle slot nozzle V2A AK DN40	63	9.989-193.0		DN 40				<input type="checkbox"/>

Available accessories.

IVC 60/12-1 TACT EC 1.576-102.0

KÄRCHER



		Order no.	Quantity	ID	Length / width	Price	Description	
Crevice nozzles bendable								
Nozzle Langschaft Siliikon DN52	64	9.988-403.0		DN 50				<input type="checkbox"/>
Crevice nozzle, zinc coated, flexible	65	9.981-423.0		DN 40				<input type="checkbox"/>
	66	9.981-424.0		DN 50				<input type="checkbox"/>
Crevice nozzle, zinc coated, flexible	67	9.981-425.0		DN 50				<input type="checkbox"/>
Surface nozzles								
Nozzle with connecting piece 90° DN40	68	9.988-118.0		DN 40				<input type="checkbox"/>
Nozzle with connecting piece 90° DN50	69	9.988-119.0		DN 50				<input type="checkbox"/>
Nozzle Surface nozzle Alu 150 mm DN40	70	9.989-666.0		DN 40				<input type="checkbox"/>
Nozzle Surface nozzle Alu 150 mm DN50	71	9.989-665.0		DN 50				<input type="checkbox"/>
Blind hole nozzles								
Nozzle Blind hole nozzle DN40	72	9.989-671.0		DN 40				<input type="checkbox"/>
Nozzle Blind hole nozzle bended 60° DN40	73	9.989-669.0		DN 40				<input type="checkbox"/>
Nozzle Blind hole nozzle bended 90° DN40	74	9.989-667.0		DN 40				<input type="checkbox"/>
Nozzle Blind hole nozzle bended 90° 200	75	9.989-670.0		DN 40				<input type="checkbox"/>
Standard brushes								
	76	9.981-431.0		DN 40				<input type="checkbox"/>
	77	9.981-432.0		DN 50				<input type="checkbox"/>
Pencil brushes								
Brush ø82 mm DN40	78	9.989-609.0		DN 40				<input type="checkbox"/>
Brush ø82 mm DN50	79	9.989-608.0		DN 50				<input type="checkbox"/>
Surface brushes								
Brush PP 24 mm DN40	80	9.989-610.0		DN 40				<input type="checkbox"/>
Vacuum brush	81	9.981-911.0		DN 40				<input type="checkbox"/>
	82	9.981-912.0		DN 50				<input type="checkbox"/>
Cylinder brushes								
Suction brush pipelines 4inch, DN40	83	9.989-047.0		DN 40				<input type="checkbox"/>
Suction brush pipelines 8inch, DN40	84	9.989-048.0		DN 40				<input type="checkbox"/>
Suction brush pipelines 12inch, DN40	85	9.989-049.0		DN 40				<input type="checkbox"/>
Pre-separators								
Separator Tc Op Liquid 125 l DN70	86	9.989-686.0		DN 70				<input type="checkbox"/>

Available accessories.