

# **KÄRCHER**

**KÄRCHER CENTER  
TRAFALGAR**

**PRODUCT SPECIFICATION/INFORMATION**

# Product Data Sheet

## HDS-E 8/16-4 M (12kW, 24kW, 36kW)

High economy, high performance electrically-heated hot water high pressure cleaners.

The HDS-E range of electrically-heated hot water pressure washers offer emission-free hot water cleaning with dramatically reduced energy consumption and heating-up times.

This range is based on the HDS middle and super class diesel-heated machines, combined with a fully insulated, energy efficient heating chamber that reduces standby power consumption by 40% compared to previous electrically-heated models. The range is available in three variants – 12, 24 and 36kW.

The HDS-E's heating tank is insulated by a specially-designed boiler jacket which keeps heated water hotter for longer, and therefore reduces power consumption and shortens heating times to as little as 5 minutes. The 36kW model offers a class-leading continuous working temperature of 58°C and a maximum working temperature of 80°C.

Further refinements include Kärcher's eco!efficiency mode, which optimises power and water consumption for daily cleaning tasks.

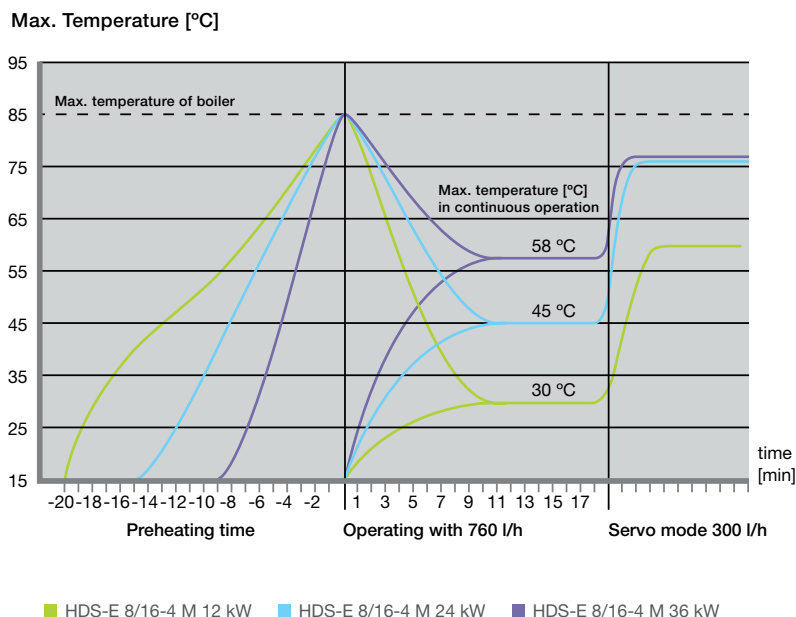
**eco!efficiency**

### Features and Benefits:

- Large, fully-insulated heating tank reduces standby power consumption by 40% compared to HDS 801 E
- eco!efficiency mode provides ideal setting for most cleaning tasks and reduces power consumption
- Proven, user-friendly chassis design with easy access to service parts
- Up to 160 bar pressure and 760 litres per hour water flow for highly efficient cleaning
- All models offer maximum 85°C boiler temperature
- 12kW version features pre-heat chamber and 30°C continuous operating temperature
- 24kW version features 45°C continuous operating temperature
- 36kW version features 58°C continuous operating temperature
- All models 10m high pressure hose and Easy Press fatigue-reducing trigger gun with Servo Control pressure and flow adjustment



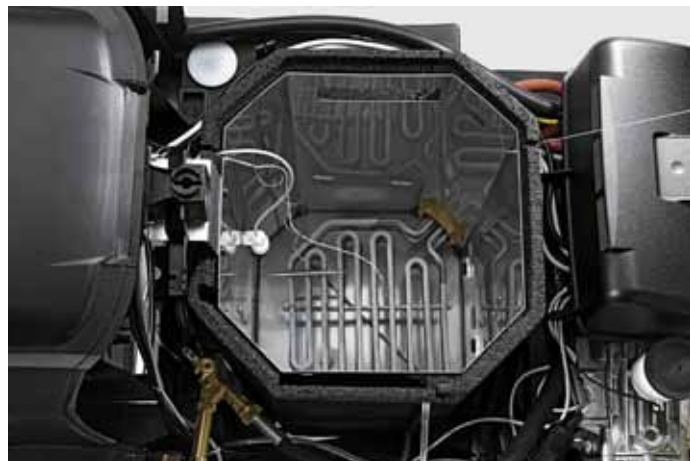
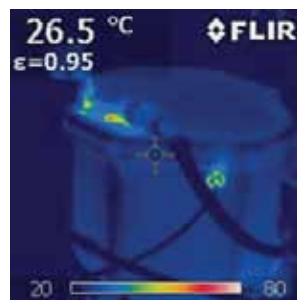
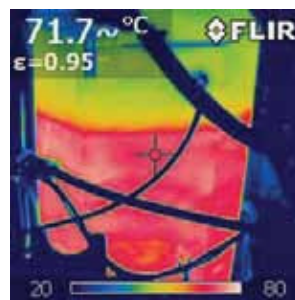
## Comparison of temperature rise: Boiler with and without preheating and Servo mode



## Insulation Jacket Reduces Heat Loss

HDS 801 E

HDS-E 8/16-4 M



## Accessories

### Standard accessories



Easy press trigger gun

4.775-463.0



Servo control

4.775-470.0



10m High-Pressure hose

6.391-238.0



1050mm Spray lance

4.760-660.0



Power nozzle

2.883-894.0



Machine protector  
RM 110 Adv

6.295-299.0

### Optional accessories



10m High-pressure extension hose

6.391-342.0



Coupling  
(for extension hose)

4.403-002.0



Rotary wash brush

4.762-284.0



Dirtblaster nozzle

4.763-988.0



FR 30 ME Hard surface cleaner

2.640-355.0



Nozzle  
(for FR 30)

2.639-187.0



Machine protector  
RM 111 Adv

6.295-287.0

## Technical Specification

	HDS-E 8/16-4 M 12 kW	HDS-E 8/16-4 M 24 kW	HDS-E 8/16-4 M 36 kW
Power supply (~V/Hz)	3/420/50	3/420/50	3/420/50
Water flow rate (l/h)	300-760	300-760	300-760
Pressure (bar/MPa)	30-160/3-16	30-160/3-16	30-160/3-16
Max. temperature (°C)	30/85	45/85	58/85
Connected load (kW)	16.5kW	28.5kW	40.5 kW
Fuel/Detergent tank (l)	25 + 20	25 + 20	25 + 20
Weight (kg)	108	112	118
Dimensions (L x W x H) (mm)	1330 x 750 x 1060	1330 x 750 x 1060	1330 x 750 x 1060
<b>Part Number</b>	<b>1.030-211.0</b>	<b>1.030-261.0</b>	<b>1.030-262.0</b>

**Tel: + 44 (0)1403 273 444**

Unit C, Foundry Close  
Horsham, West Sussex.  
RH13 5TX.  
United Kingdom

Unit C  
Foundry Close  
Horsham  
West Sussex  
RH13 5TX  
United Kingdom

**T.** 01403 273444

**E.** [sales@tce.org.uk](mailto:sales@tce.org.uk)

**W.** [trafalgarequipment.co.uk](http://trafalgarequipment.co.uk)

**KÄRCHER**

KÄRCHER CENTER  
**TRAFALGAR**